

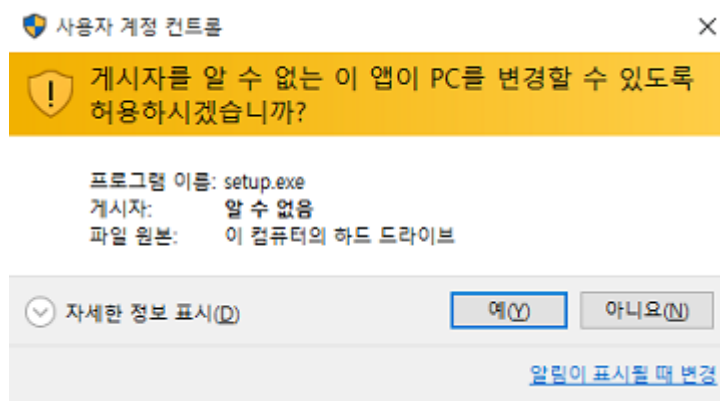
# UNIS 4.5 Software Installation Guide

UNIONCOMMUNITY

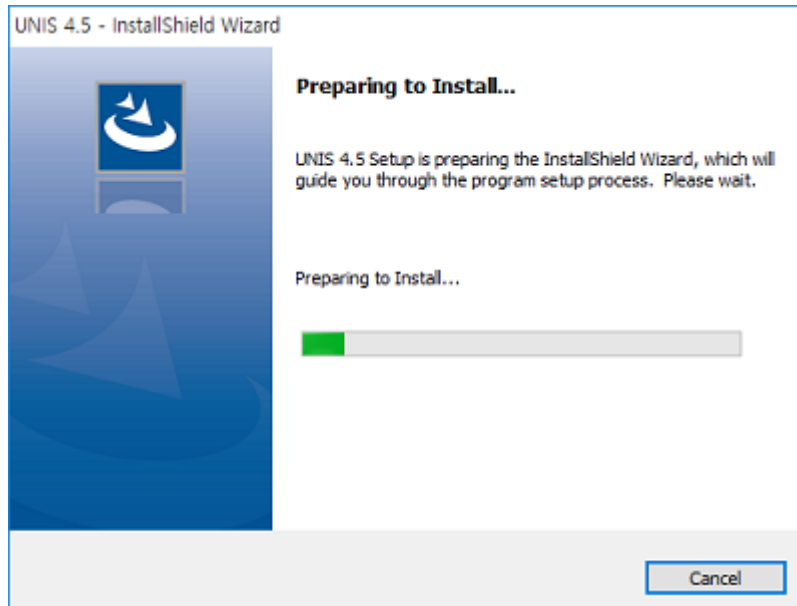
1. Execute the file "Setup.exe"

| 이름          | 수정된 날짜           | 유형                   | 크기       |
|-------------|------------------|----------------------|----------|
| Patch       | 2018-12-23 오후... | 파일 폴더                |          |
| Tool        | 2018-12-26 오후... | 파일 폴더                |          |
| Data1       | 2018-12-23 오후... | 캐비닛 파일               | 34,592KB |
| ISSetup.dll | 2018-12-23 오후... | 응용 프로그램 확장           | 2,389KB  |
| setup       | 2018-12-23 오후... | 응용 프로그램              | 3,729KB  |
| UNIS 4.5    | 2018-12-23 오후... | Windows Installer... | 729KB    |

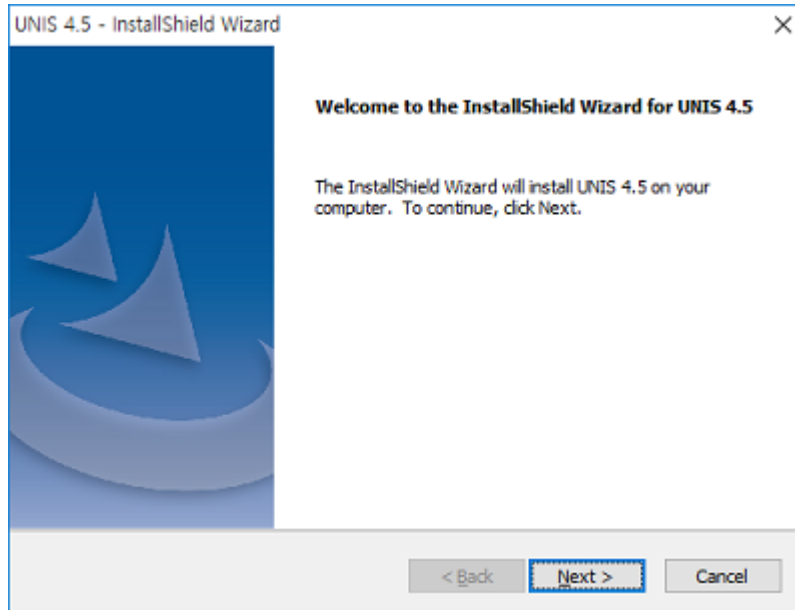
2. Permit to start the file "Setup.exe" as an administrator on Windows OS



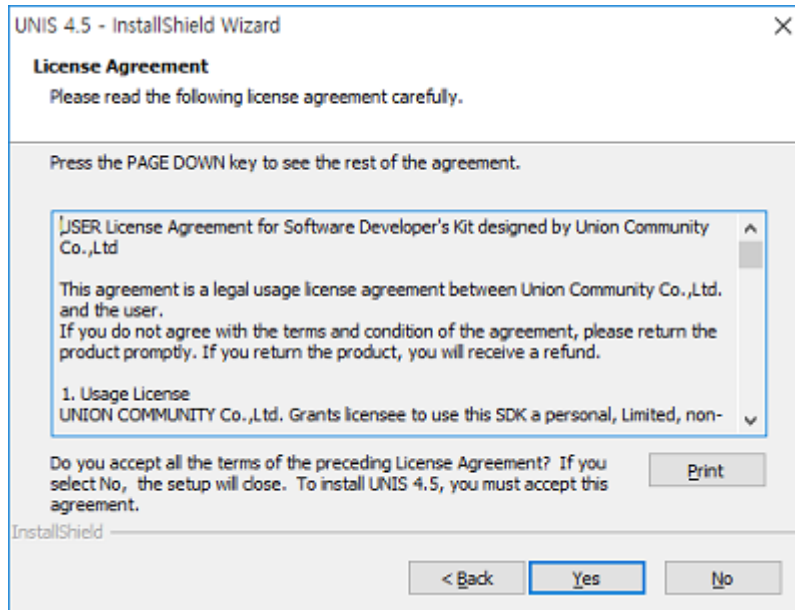
3. Preparing to install



#### 4. Start to Install



#### 5. License Agreement



### 6. Enter the company information

The screenshot shows a dialog box titled "InstallShield Wizard" with a close button (X) in the top right corner. The main area contains the following text and input fields:

Please enter your company information.  
Warning : If you do not register your company information you are not able to have software update notice.

Company Name:

Company Address:

Contact Person:

Email Address:

Telephone Number:

At the bottom left, it says "InstallShield". At the bottom right, there are three buttons: "< Back", "Next >" (highlighted with a blue border), and "Cancel".

### 7. Choose the folder where setup will install files

The screenshot shows a dialog box titled "UNIS 4.5 - InstallShield Wizard" with a close button (X) in the top right corner. The main area contains the following text and input fields:

**Choose Destination Location**  
Select folder where setup will install files.

Setup will install UNIS 4.5 in the following folder.  
To install to this folder, click Next. To install to a different folder, click Browse and select another folder.

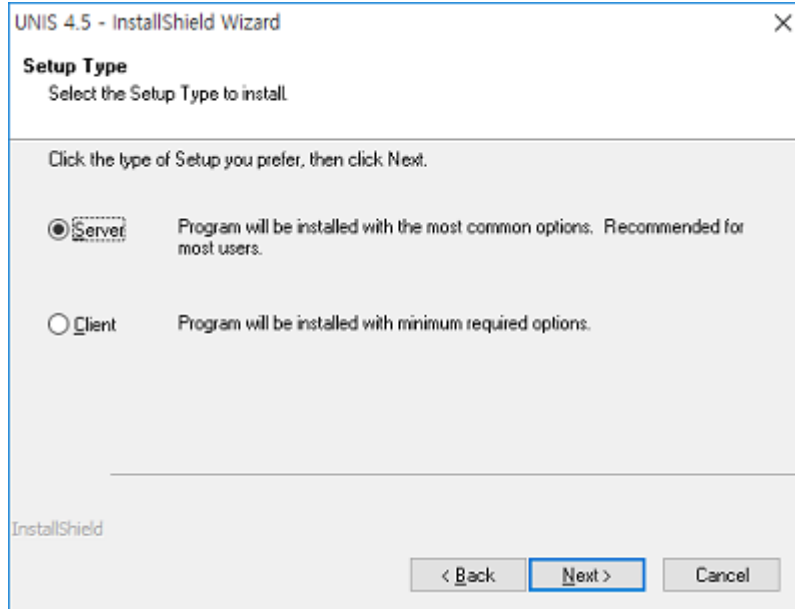
Destination Folder  
  
Browse...

At the bottom left, it says "InstallShield". At the bottom right, there are three buttons: "< Back", "Next >" (highlighted with a blue border), and "Cancel".

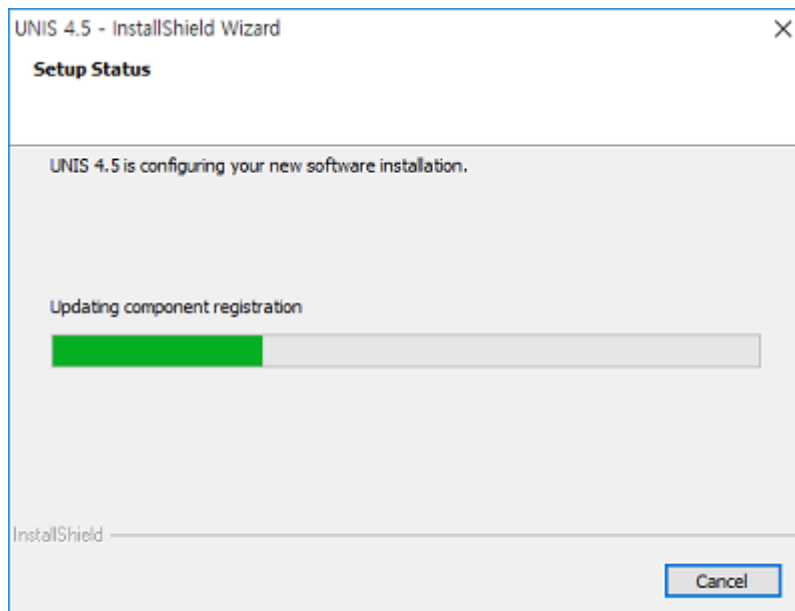
8. Select the Setup Type to install

UNIS Server should be installed to one PC machine only.

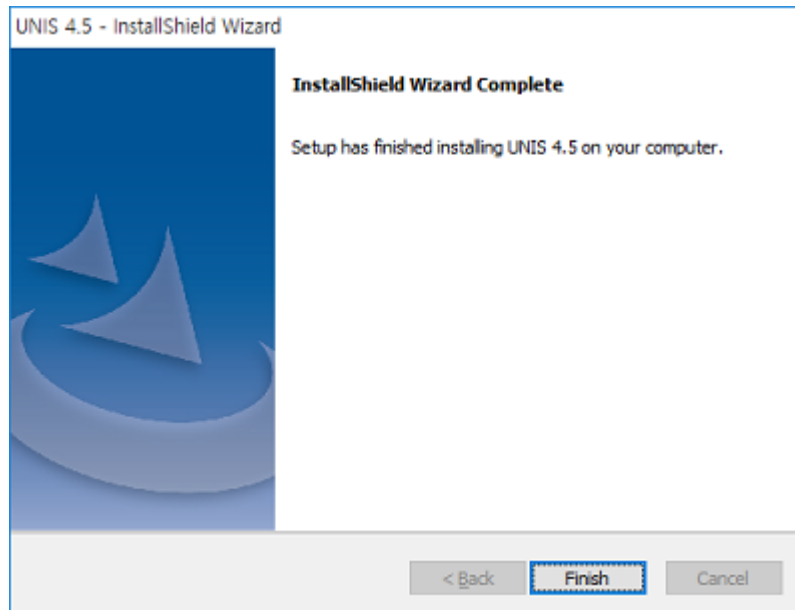
But UNIS Client can be installed to the multiple PC machines.



9. Progress bar for Installation

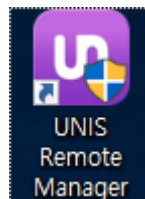


## 10. Finish installing UNIS V4.5

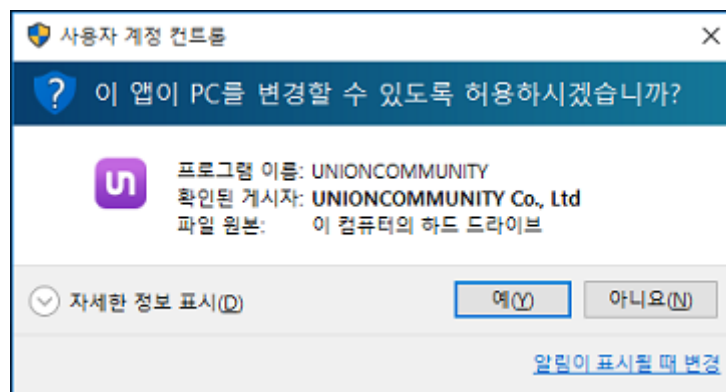


## 11. Execute the UNIS Remote Program

Double click the UNIS icon from the desktop



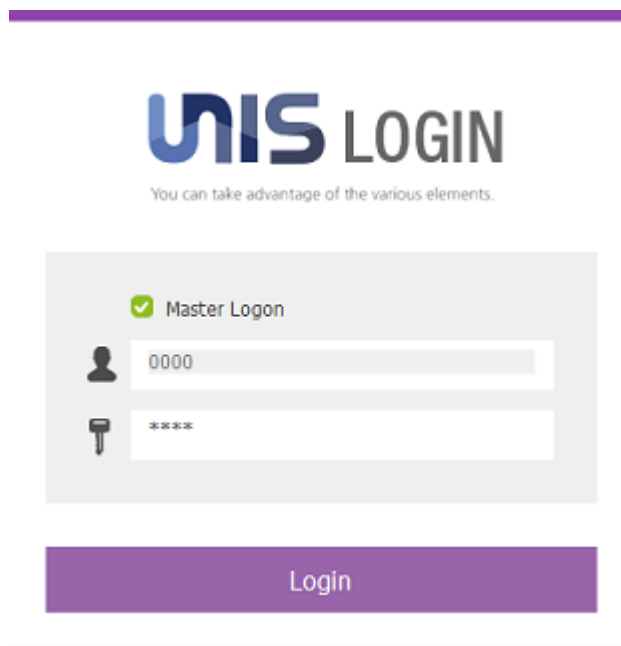
## 12. Permit to start "UNIS" programas an administrator on Windows OS



### 13. Change the master password



### 14. Log on the UNIS program with the master account



### 15. Open the UNIS Remote manager program

