

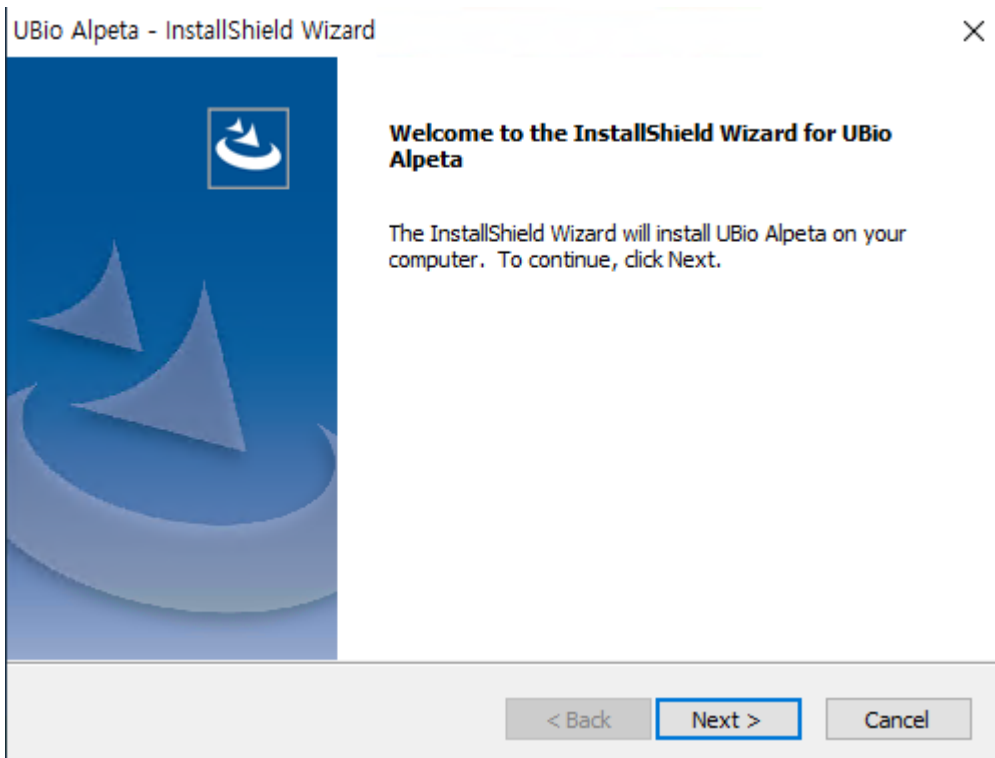
UBio Alpeta

Installation Guide

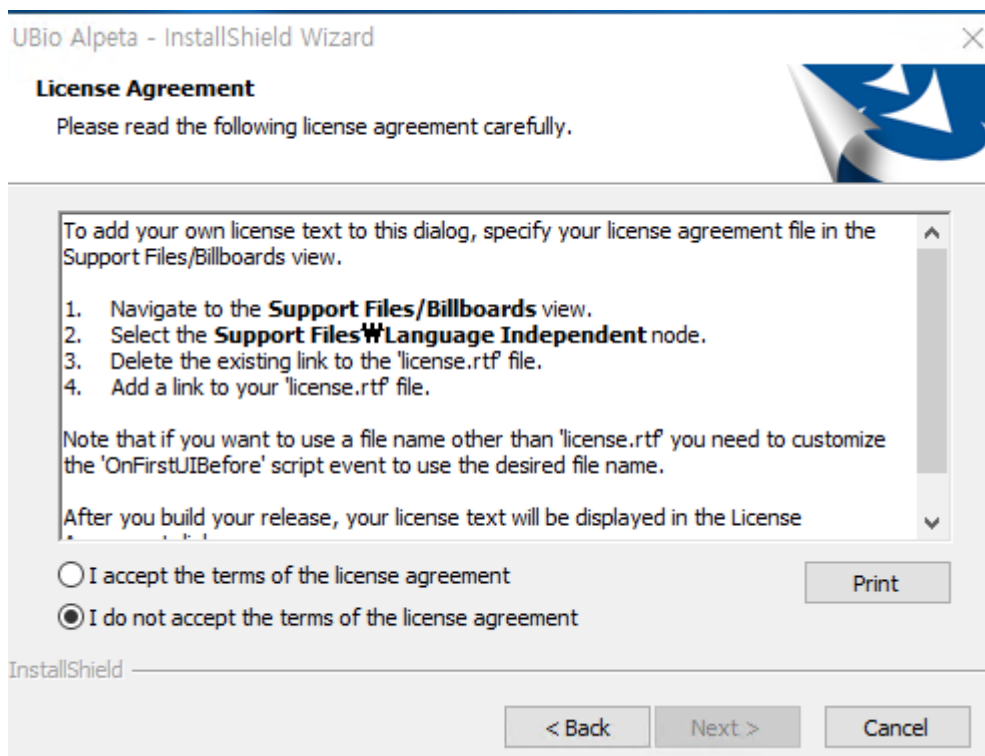
UNION COMMUNITY

1. Install the program.

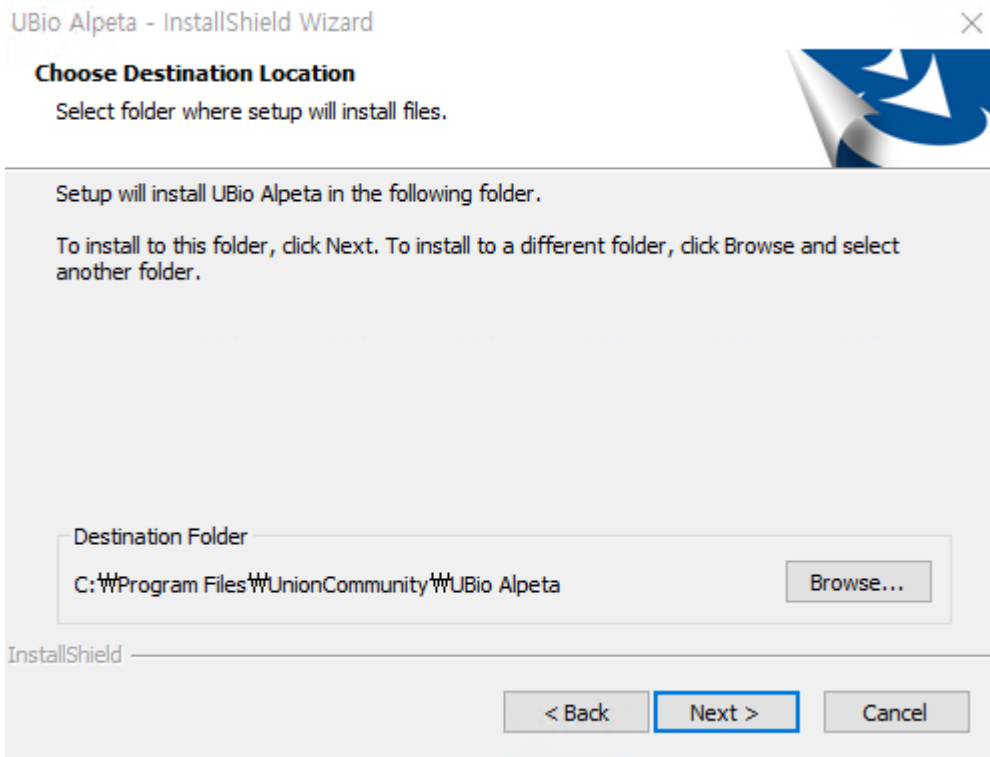
- After executing the installation file, click [Next] button to continue the installation.



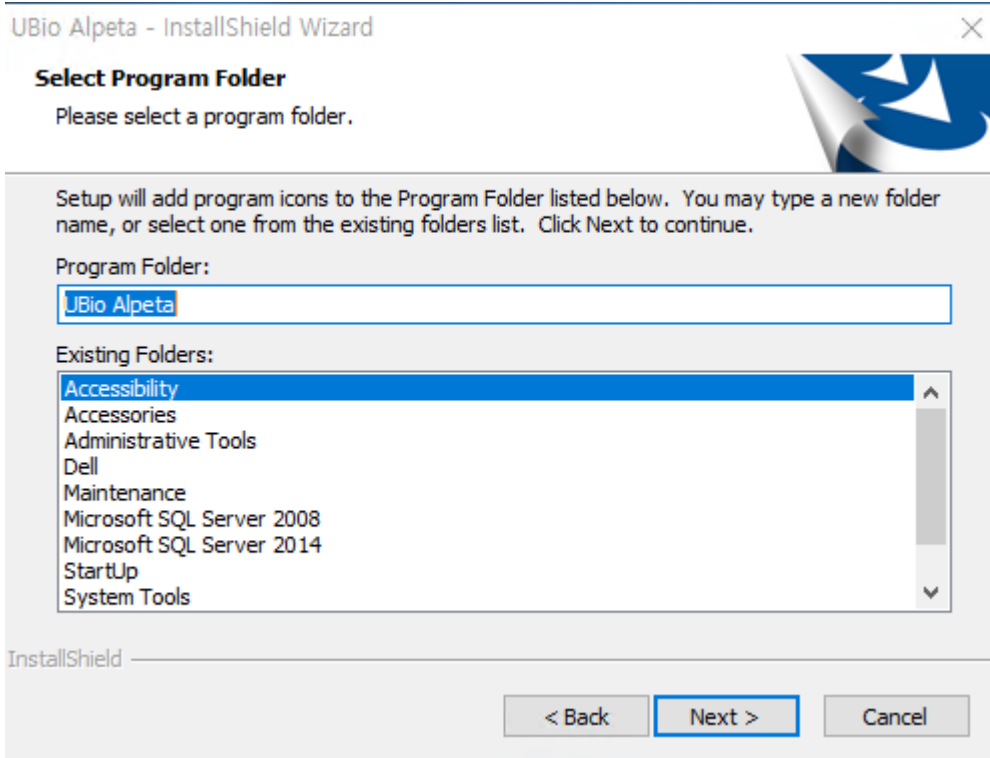
- Agree in the license agreement and then click [Next] button.



- Save the path to install and click [Next] button.



- Set the name to install the program and click [Next] button.

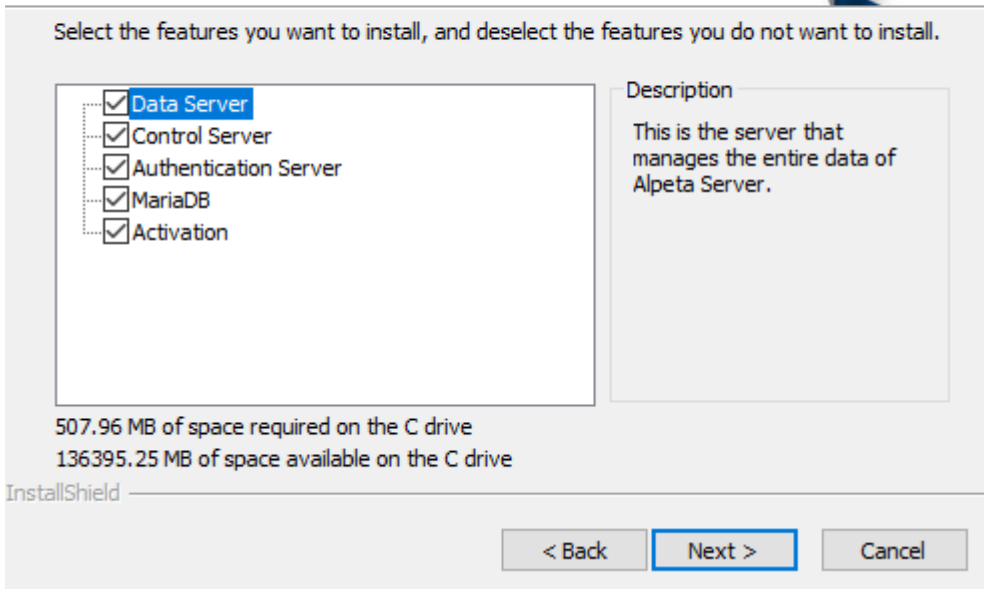


- Select the server to install.

UBio Alpeta - InstallShield Wizard

Select Features

Select the features setup will install.

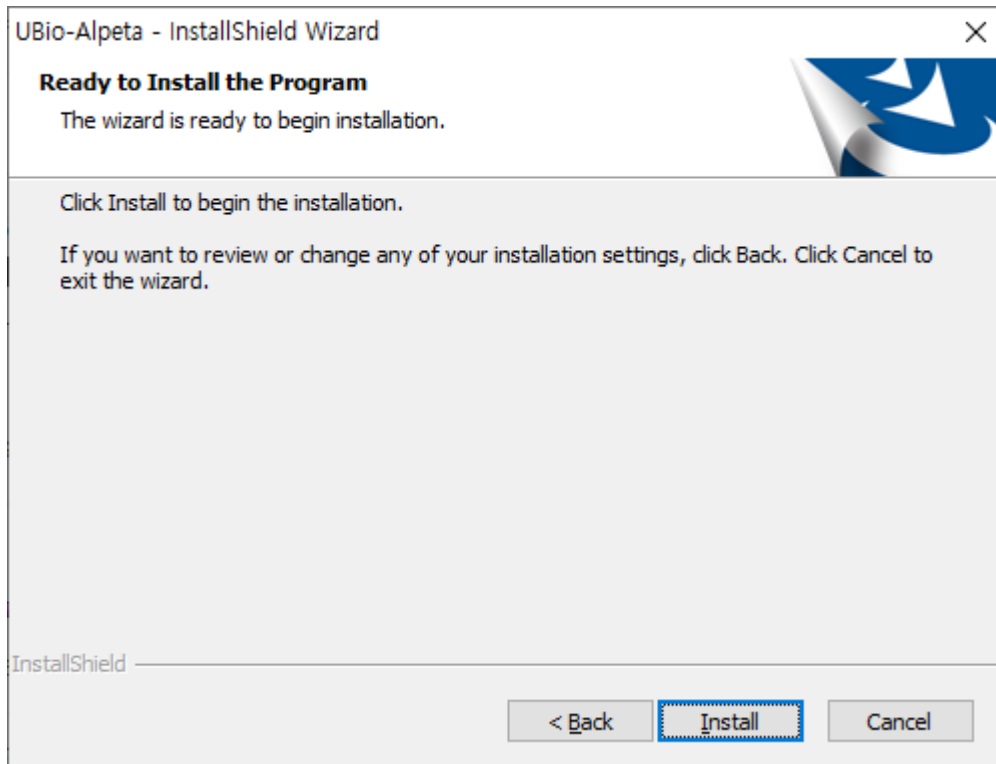


Below is the details for each server.

- Data Server (Data Server): Data base is directly connected. It controls the operation and data of both Control server and Authentication server. If the data server is installed, TNA server is automatically installed.
- Control Server(Control Server): It is the server to control the terminal and management program. The terminal uses TCP/IP and the management program uses http communication.
- Authentication Server(Authentication server): It is the server to process the authentication of fingerprint and face. It includes the feature to process 1:N authentication with high-speed.
- MariaDB : MariaDB will be installed. If you are planning to use MSSQL, you don't need to check it.
- Activation : Install license server for face authentication on the server for AC7000, UBio-X Pro and Pro Lite..

Since it installs both Control Server and Authentication Server, it can break up the server loading.

- The setting has been completed. Click [Install] button to start the installation.



- The installation has been completed. Click [Finish] button to execute the initial setting screen.

2. Progress the initial setting.

If the setting is completed, it automatically executes the page to progress the initial setting.

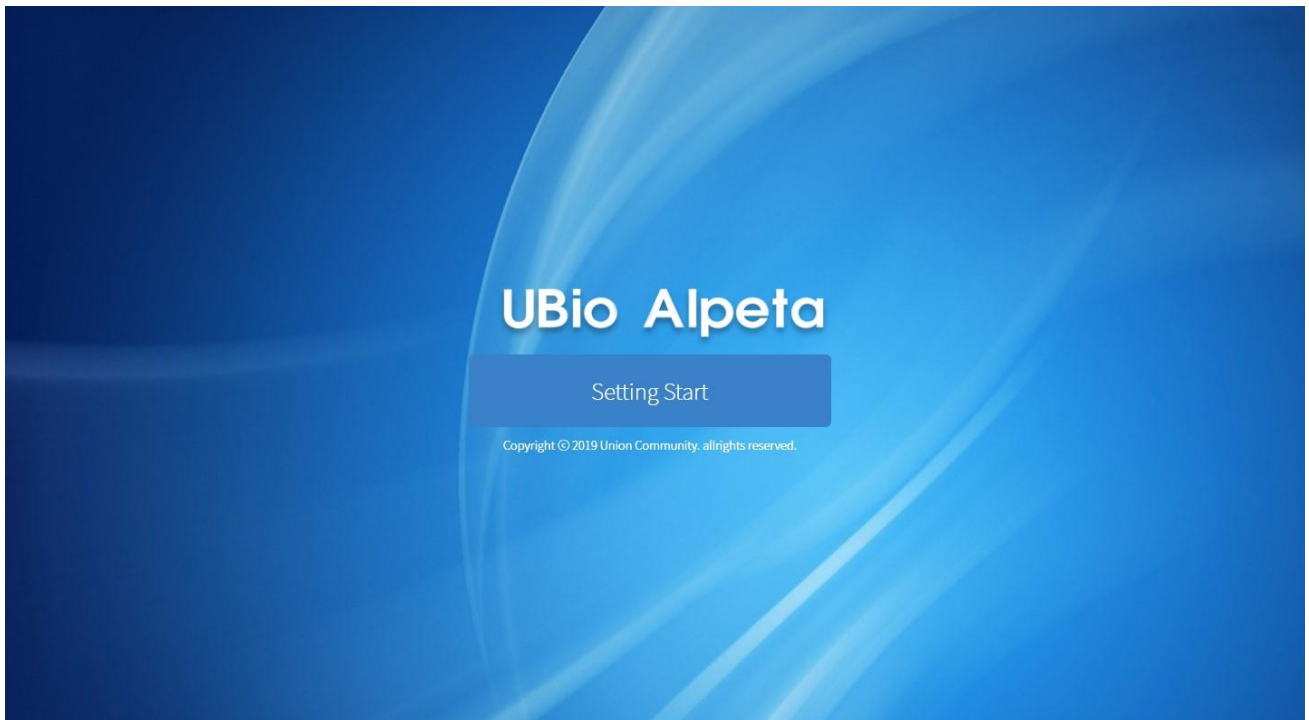
The initial setting can be supported only in the browser below.

- Chrome
- Opera
- Firefox

If it executes in other browsers except for above, please execute again by using the address below.

- <http://127.0.0.1:8555/v1>

- Click [Start setting]



- Select the database type and [Next] button.

The screenshot shows a software installation wizard with a dark blue header. On the left, there is a sidebar with a grey background. The top section of the sidebar is titled "UBio Alpeta" and contains the text: "Install the UBio-Alpeta program that can be monitored and managed in conjunction with the terminal". Below this is a "Show information" link. The main area of the wizard is titled "Select database type" and contains two radio button options: "MS SQL Server" (which is selected) and "MariaDB". At the bottom right of the wizard, there are two buttons: "<< Previous" and "Next >>".

-

To create the database of Alpeta, enter the setting value.

- Selected MS-SQL Server

UBio Alpeta

Install the UBio-Alpeta program that can be monitored and managed in conjunction with the terminal

Show information

DB creation and setup

Basic Setting

ID	127.0.0.1
Port	1,433
Instance Name	
ID	sa
Password	
File Path	

<< Previous Next >>

- If you don't enter the file path, it creates in the basic path set by SQL server.
- If all settings are completed, click [Next] button.

If the information is wrong, it cannot go to next step. If the DB already exists, it asks whether to create newly or use again to process next.

■ Selected MariaDB

UBio Alpeta

Install the UBio-Alpeta program that can be monitored and managed in conjunction with the terminal

Show information

Select database type

Basic Setting

I will install a new DB
 already have a DB installed

Service Name	AlpetaDBService
IP	127.0.0.1
Port	3,306
ID	root
Password	

<< Previous Next >>

- I will install a new DB: New installation function of MariaDB
- Already have a DB installed: Add database to existing MariaDB.
- If all settings are completed, click [Next] button.

If the information is wrong, it cannot go to next step. If the DB already exists, it asks whether to create newly or use again to process next.

- ※ If you have been installed mysql(mariaDB) yourself before installing Alpeta, 3306 port may already be used. In this case, please set port number to another one from the setting page.

- Data server setting

Data server settings

UBio Alpeta
Install the UBio Alpeta program that can be monitored and managed in conjunction with the terminal

Show information

Basic Setting

ID	1
IP Batch Setting	IP Manual Input

Control Server

IP	
Port	9001

Authentication Server

IP	
Port	9101

TNA Server

IP	
Port	9201

1 / 1

<< Previous
Next >>

- You can see below only when the data server is installed.
 - Basic setting
 - ◆ ID: ID of data server, which fixes 1.
 - ◆ IP Batch Setting: If you set IP Manual Input, you need to put all IP boxes manually. If you want to fill automatically, please select from the list. (IP lists are detected from PC lan card.)
 - Control Server
 - ◆ IP: Enter the IP in order that Control server can access.
 - ◆ PORT: Enter the port number in order that Control Server can access. The basic value is 9001.
 - Authentication Server
 - ◆ IP: Enter the IP in order that the authentication server accesses.
 - ◆ PORT: Enter the port number in order that the authentication server can access. The basic value is 9101.

- TNA Server

- ◆ IP: Enter the IP in order that TNA server can access.
- ◆ PORT: Enter the port number in order that TNA Server can access. The basic value is 9201.

- Control Server setting

UBio Alpeta
Install the UBio-Alpeta program that can be monitored and managed in conjunction with the terminal

Show information

Control Server settings

Basic Setting

ID	11
UDP PORT	9,870

Data Server Connection Settings

IP	
Port	9,001

Web Client Server

IP	
Port	9,004

HTTP HTTPS

Terminal Server

IP	
Port	9,003

<< Previous Next >>

- You can see only when Control Server is set.

- Basic setting

- ◆ ID: Enter the ID of Control Server. If the other Control Server is installed, please be caution of overwriting the ID.
- ◆ Terminal type (0:Nitgen, 1: Viridi)
- ◆ UDP PORT: UDP server port

- Data Server connection setting

- ◆ IP: Enter the IP to connect with Data Server.

- ◆ PORT: Enter the port number to connect with Data Server.
- Web Client Server
 - ◆ IP: Enter the IP to access to Web Client.
 - ◆ PORT: Enter the port number in order that Web Client can access.
- Terminal Server
 - ◆ IP: Enter the IP in order that the terminal can access.
 - ◆ PORT: Enter the port number in order that the terminal can access.
- Authentication server setting

Authentication server settings

UBio Alpeta
Install the UBio-Alpeta program that can be monitored and managed in conjunction with the terminal

Show information

Basic Setting

ID	101
----	-----

Data Server Connection Settings

IP	
Port	9,101

DataBase Connection Settings

DB Kinds	MS SQL Server
IP	
Port	1,433
Instance Name	
ID	
Password	

<< Previous
Next >>

- It is shown only when the authentication server is installed.
 - Basic setting
 - ◆ ID: Enter the ID of authentication server. If the other installation is installed, please be caution to overwrite.
 - Data Server connection setting

- ◆ IP: Enter the IP to connect with Data Server.
- ◆ PORT: Enter the port number to connect with Data Server.
- Database connection setting
 - ◆ It is the setting that the authentication server connects to database.
 - ◆ Set depending on DB type.

- Setting information

UBio Alpeta
Install the UBio Alpeta program that can be monitored and managed in conjunction with the terminal

Show information

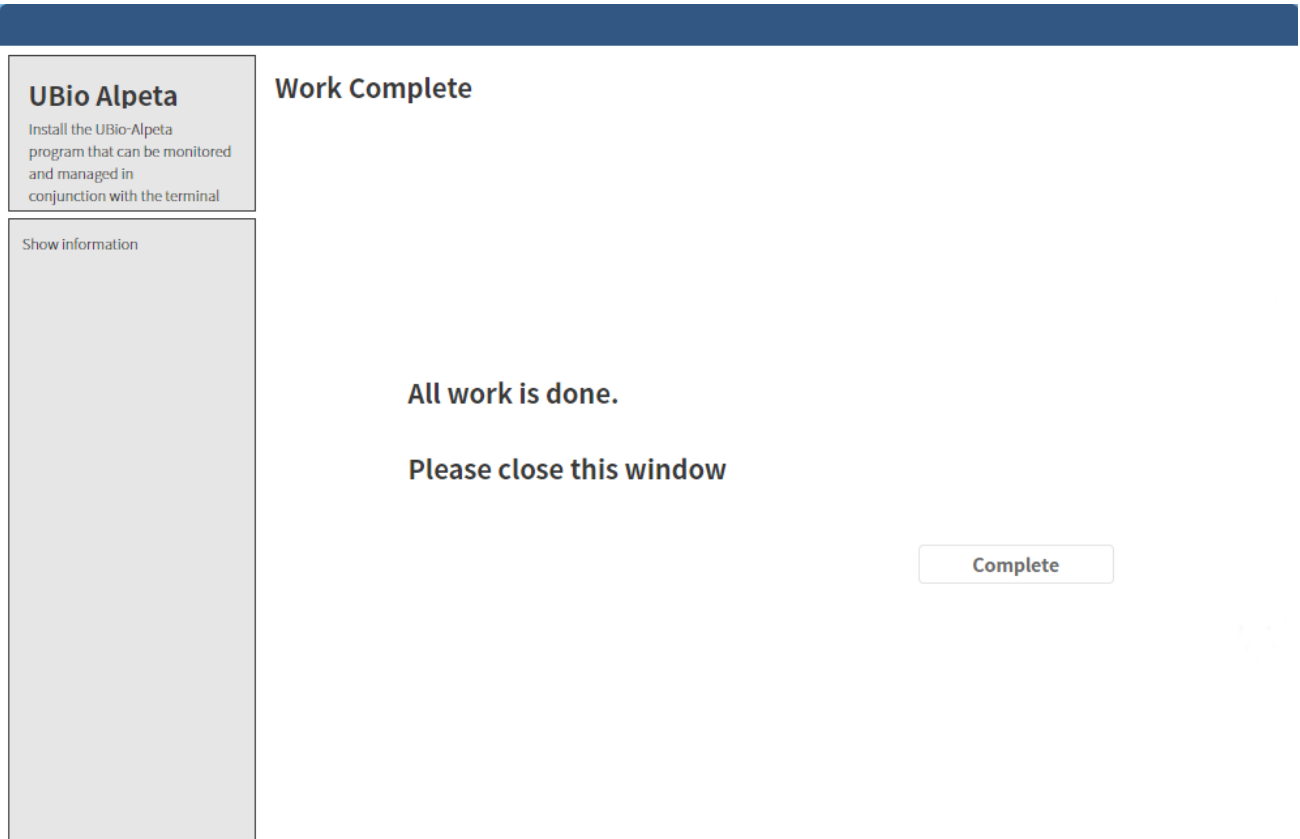
All information

SUMMARY

Loading...

- Save information you entered.

- Complete the setting.



The screenshot shows a dialog box with a dark blue header bar. On the left, there is a sidebar with a grey background. The top part of the sidebar contains the text 'UBio Alpeta' in bold, followed by 'Install the UBio-Alpeta program that can be monitored and managed in conjunction with the terminal'. Below this is a 'Show information' link. The main area of the dialog box has a white background and contains the text 'Work Complete' at the top. In the center, it says 'All work is done.' and 'Please close this window'. At the bottom right, there is a 'Complete' button.

- The server setting has been completed.
- To connect Alepta terminal, you should enter PORT: 9003.