

ZKTeco

F35

Standalone Access Control Terminal
Support In-Glass Fingerprint Verification
With Video Intercom Function



Fingerprint Recognition



RFID



Video Intercom (SIP)



TCP/IP



Wi-Fi



IP65

Compatible with

ZKBio CVAccess



Introduction

F35 from ZKTeco is a standalone access control terminal featuring a video intercom function. F35 adopts in-glass fingerprint verification, offering secure biometric authentication without a dedicated button.

F35 also supports multiple tech card modules for verification, and it can be a time and attendance terminal when integrated with the ZKBioTime software.

Also, one of the notable features of the F35 is that it has a 2.4-inch color monitor, a 2MP camera, a built-in microphone, and speakers for one-way video intercom via indoor monitor with SIP protocol. F35 supports the ONVIF protocol; its firmware has AC push and can convert to TA push.

The aluminium alloy frame of the F35 offers robust protection, and it attained an IP65 protection rating, guaranteeing that this terminal operates in adverse weather.

Features

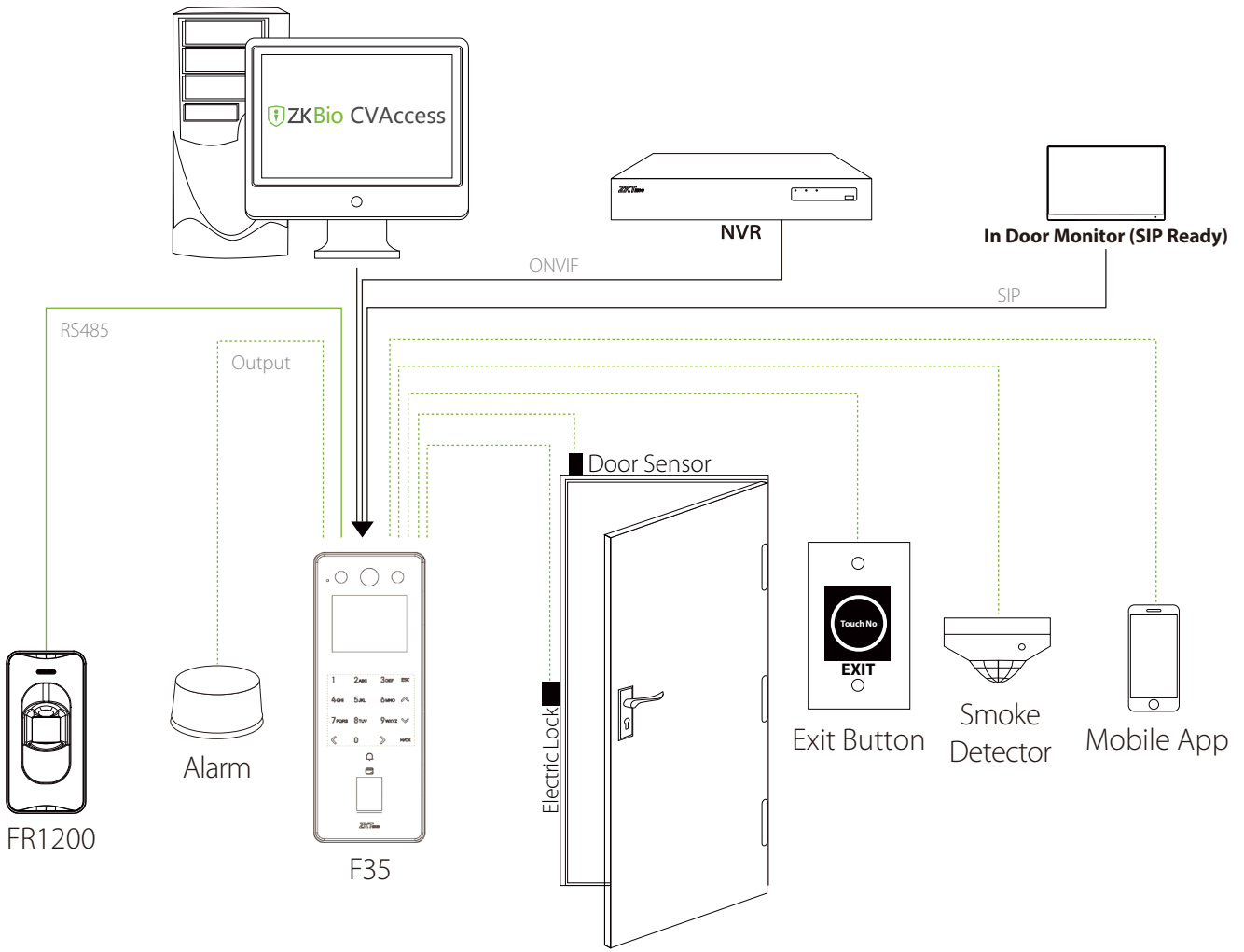
- In-glass fingerprint verification.
- Aluminium alloy frame and 2.5D glass panel.
- Support SIP Client (Ver2.0) for one-way video intercom.
- Fully compatible with ZKTeco SIP Video intercom indoor monitor (VT07-B01 and VT07-B01-W)
- Attained IP65 protection rating with dustproof and waterproof.
- Communication: TCP/IP and Wi-Fi (Optional).
- Support video talk via mobile app: ZSmart.
- Available card modules: 125 kHz ID card (standard) / 125 kHz ID card & 13.56MHz IC card (optional) / Multi tech card (optional): 125kHz & 13.56MHz ID & IC card & DESFire EV1 / EV2 / Felica / HID proxy / HID ICLASS.
- Multiple Verification Methods: Fingerprint / Card / Password.
- Support AC push and convert to TA push.
- Support Doorbell and Wireless Doorbell (Optional).

Specifications

Model	F35
Display	2.4" @ TFT Color LCD Screen (720*1280)
Camera	Camera @ 2MP

Field of View	Diagonal: 145°, Horizontal: 118°, Vertical: 62°
Operation System	Linux
Hardware	CPU: 1.2GHz Dual Core RAM: 256MB; ROM: 512MB Speaker: 8ohms±20% @1.0W Microphone: *1 (Sensitivity: -29 to -35 dB / Omni-directional / Signal-to-Noise Ratio: 58 dB / Impedance: 2.2 kΩ Fingerprint Sensor: In-Glass Fingerprint (Z-ID)
Authentication method	Fingerprint / Card / Password (Physical Touch Keypad)
User Capacity	10,000 (1:N)
Card Capacity	10,000 (1:N)
Fingerprint Template Capacity	10,000 (1:N)
Transaction Capacity	500,000
Max. User Password Length	6 to 8 Digits
Biometric Verification Speed	less than 0.3 sec (Fingerprint)
False Acceptance Rate (FAR) %	FAR ≤ 0.0001% (ZKFingerprint V10.0)
False Rejection Rate (FRR) %	FRR ≤ 0.01% ; (ZKFingerprint V10.0)
Biometric Algorithm	ZKFingerprint V10.0
Card Type	ID Card@125 kHz (Standard) Optional Multi-Tech Module: Module1: ID & IC & DESFire EV1 / EV2; (125 kHz & 13.56 MHz Dual Frequency) Module 2: ID & IC & DESFire EV1 / EV 2 & FeliCa & Legic & HID Prox (125 kHz & 13.56 MHz Dual Frequency) Module 3: ID & IC & DESFire EV1 / EV2 & FeliCa & Legic & HID Prox & HID iClass (125 kHz & 13.56 MHz Dual Frequency)
Communication	TCP/IP*1 Wi-Fi (IEEE802.11a/g/n) @ 2.4 GHz Wiegand (Input & Output)*1 RS485: ZKTeco RS485 *1 Aux Inputs *1, Aux Outputs *1, Electric Lock*1, Door Sensor*1, Exit Button*1, Alarm*1, Doorbell*1,
Standard Functions	Webserver, ADMS, DST, Up to 14-digit User ID, Access Levels, Groups, Holidays, Anti Passback, Record Query, Tamper Switch Alarm, Multiple Verification Methods Video Door Phone, ONVIF (Compatible with Profile S, Profile T, Profile G, Profile C, Profile Q & Profile A), AC Push and TA Push, Protocol Switch, HTTPS / SSH Backend Access, T9 Keyboard (Input)
Optional Functions	ZSmart, SIP Client (Ver2.0), Wi-Fi, IC Card, Multi-Tech Module: Module 1 / Module2 / Module 3, Wireless Doorbell
Access Control Interface	RS485 (DM10 Controller 1 Door Expansion (Coming soon) / RS485 Card Reader / Fingerprint Reader)
Power Supply	DC 12V 3A
Operating Temperature	-5°C to 55°C (23 °F to 131 °F)
Operating Humidity	10% to 90% RH (Non-condensing)
Dimensions	195 mm*75 mm*25.35 mm (L*W*H)
Gross Weight	1.13 Kg
Net Weight	0.52 Kg
Supported Software	Software: ZKBio CVAccess / ZKBioTime Mobile App: ZSmart
Installation	Wall-mount (Compatible with Asian Gang-box / Single Gang-Box / European Gang-Box)
Housing Material	Aluminium Alloy
Ingress Protection Rating	IP65 (waterproof and dustproof) IK04 (Vandal Resistant)
Certifications	ISO14001, ISO9001, CE, FCC, RoHS

Configuration



Dimensions (mm)

